



# Rabaptin-5 $\alpha$ Polyclonal Antibody

<b>Catalog No</b>	YP-Ab-00716
<b>Isotype</b>	IgG
<b>Reactivity</b>	Human;Mouse;Rat
<b>Applications</b>	IHC;IF;ELISA
<b>Gene Name</b>	RABEP1
<b>Protein Name</b>	Rab GTPase-binding effector protein 1
<b>Immunogen</b>	The antiserum was produced against synthesized peptide derived from human RABEP1. AA range:549-598
<b>Specificity</b>	Rabaptin-5 $\alpha$ Polyclonal Antibody detects endogenous levels of Rabaptin-5 $\alpha$ protein.
<b>Formulation</b>	Liquid in PBS containing 50% glycerol, 0.5% BSA and 0.02% sodium azide.
<b>Source</b>	Polyclonal, Rabbit,IgG
<b>Purification</b>	The antibody was affinity-purified from rabbit antiserum by affinity-chromatography using epitope-specific immunogen.
<b>Dilution</b>	IHC: 1/100 - 1/300. ELISA: 1/40000.. IF 1:50-200
<b>Concentration</b>	1 mg/ml
<b>Purity</b>	$\geq 90\%$
<b>Storage Stability</b>	-20°C/1 year
<b>Synonyms</b>	RABEP1; RAB5EP; RABPT5; RABPT5A; Rab GTPase-binding effector protein 1; Rabaptin-4; Rabaptin-5; Rabaptin-5alpha; Renal carcinoma antigen NY-REN-17
<b>Observed Band</b>	
<b>Cell Pathway</b>	Cytoplasm. Early endosome. Recycling endosome. Cytoplasmic vesicle.
<b>Tissue Specificity</b>	Cervix carcinoma,Epithelium,Fetal brain cortex,Kidney,Plate
<b>Function</b>	function:Rab effector protein acting as linker between gamma-adaptin, RAB4A and RAB5A. Involved in endocytic membrane fusion and membrane trafficking of recycling endosomes. Stimulates RABGEF1 mediated nucleotide exchange on RAB5A.,PTM:Proteolytic cleavage by caspases in apoptotic cells causes loss of endosome fusion activity.,similarity:Belongs to the rabaptin family.,subunit:Heterodimer with RABGEF1. The heterodimer binds RAB4A and RAB5A that have been activated by GTP-binding. Binds TSC2, GGA1, GGA2, GGA3, AP1G1 and AP1G2.,
<b>Background</b>	function:Rab effector protein acting as linker between gamma-adaptin, RAB4A and RAB5A. Involved in endocytic membrane fusion and membrane trafficking of recycling endosomes. Stimulates RABGEF1 mediated nucleotide exchange on RAB5A.,PTM:Proteolytic cleavage by caspases in apoptotic cells causes loss of endosome fusion activity.,similarity:Belongs to the rabaptin



family.,subunit:Heterodimer with RABGEF1. The heterodimer binds RAB4A and RAB5A that have been activated by GTP-binding. Binds TSC2, GGA1, GGA2, GGA3, AP1G1 and AP1G2.,

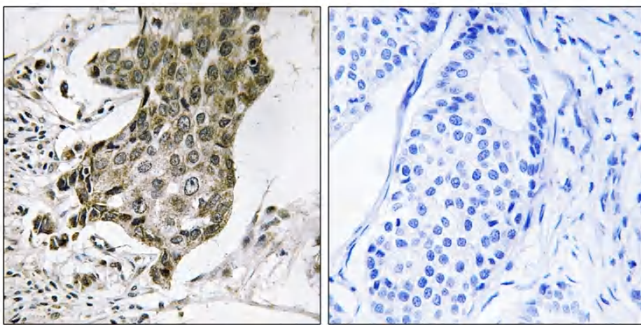
**matters needing attention**

Avoid repeated freezing and thawing!

**Usage suggestions**

This product can be used in immunological reaction related experiments. For more information, please consult technical personnel.

## Products Images



Immunohistochemistry analysis of paraffin-embedded human breast carcinoma tissue, using RABEP1 Antibody. The picture on the right is blocked with the synthesized peptide.